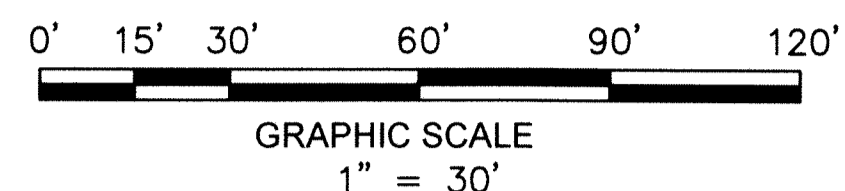


THIS INSTRUMENT WAS PREPARED BY  
DONNA C. WEST OF  
**PULICE LAND SURVEYORS, INC.**  
CERTIFICATE OF AUTHORIZATION NO. LB3870  
5381 NOB HILL ROAD  
SUNRISE, FLORIDA 33351  
954-572-1777 FAX 954-572-1778

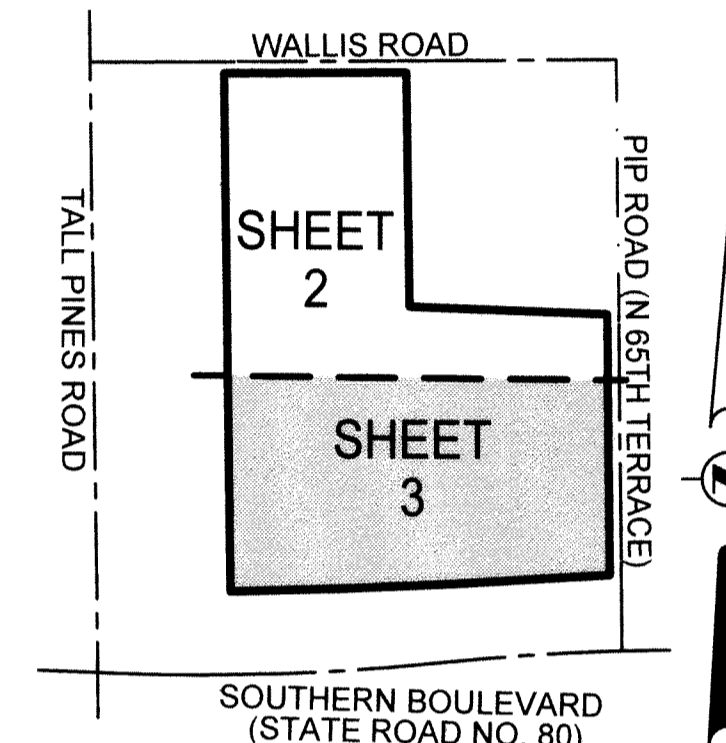
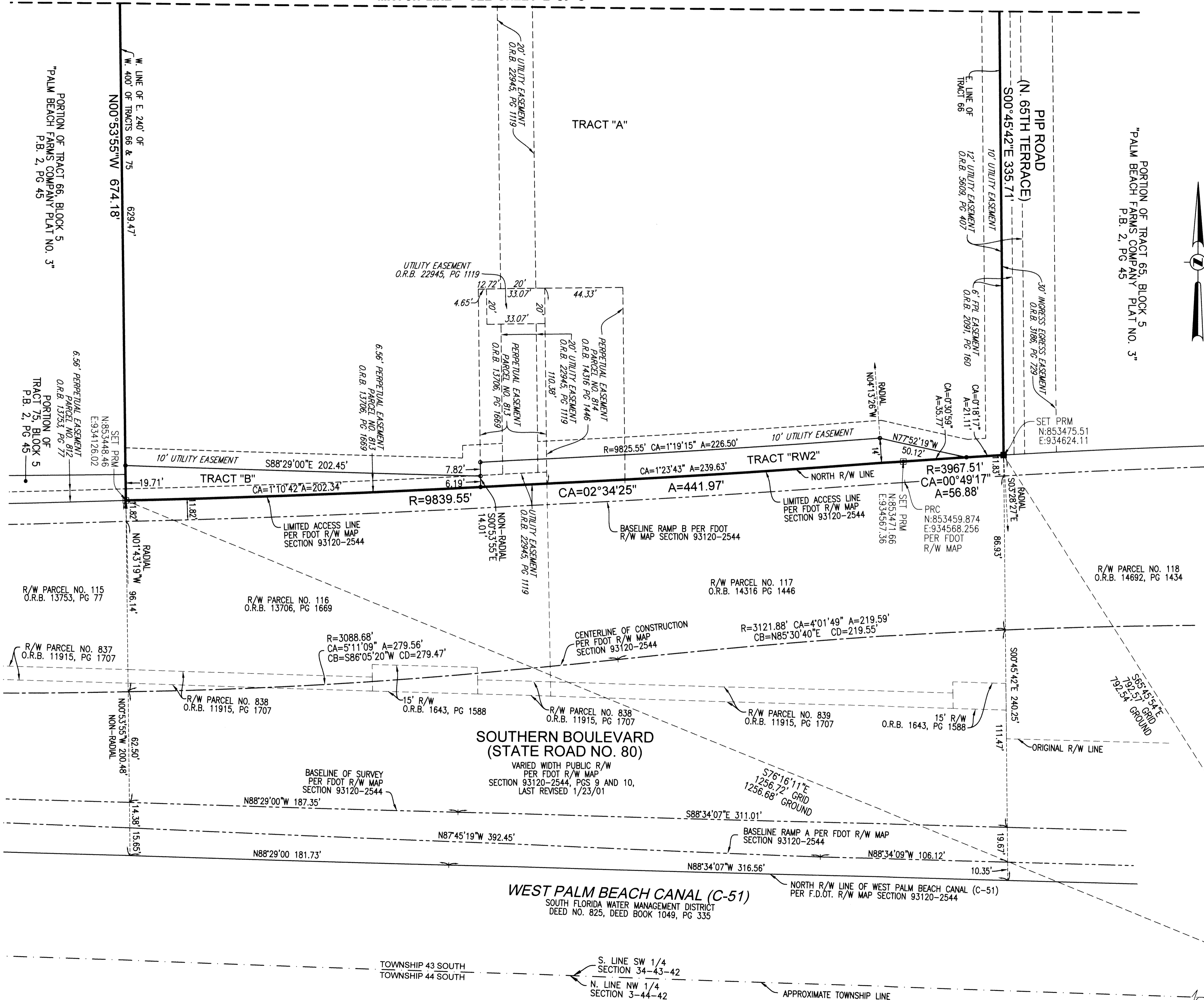
# ACADEMY BUS

A REPLAT OF A PORTION OF TRACTS 66 AND 75, BLOCK 5, OF "PALM BEACH FARMS COMPANY PLAT NO. 3", RECORDED IN PLAT BOOK 2, PAGE 45, OF THE PUBLIC RECORDS OF PALM BEACH COUNTY, FLORIDA, TOGETHER WITH A PORTION OF THE ABANDONED LOTS AND RIGHT-OF-WAY OF "ADDITION 1 BOULEVARD PARK", ACCORDING TO THE PLAT THEREOF, AS RECORDED IN PLAT BOOK 14, PAGE 18, OF SAID PUBLIC RECORDS OF PALM BEACH COUNTY, FLORIDA, BY RESOLUTION RECORDED IN OFFICIAL RECORDS BOOK 1643, PAGE 1588, OF SAID PUBLIC RECORDS, ALL LYING WITHIN SECTION 34, TOWNSHIP 43 SOUTH, RANGE 42 EAST, PALM BEACH COUNTY, FLORIDA

121



MATCH LINE SEE SHEET 2 OF 3



- KEY MAP**  
NOT TO SCALE
- LEGEND & ABBREVIATIONS:**
- ◻ = SET PERMANENT REFERENCE MONUMENT (PRM) 4"X4" X 24" CONCRETE MONUMENT WITH ALUMINUM DISK "PRM L09870"
  - = SET 1/2" IRON PIPE WITH CAP LB #3870
  - ⊙ = CENTERLINE
  - A = ARC LENGTH
  - CA = CENTRAL ANGLE
  - CB = CHORD BEARING
  - CD = CHORD DISTANCE
  - FDOT = FLORIDA DEPARTMENT OF TRANSPORTATION
  - FPL = FLORIDA POWER & LIGHT COMPANY
  - LB = LICENSED BUSINESS
  - O.R.B. = OFFICIAL RECORDS BOOK
  - P.B. = PLAT BOOK
  - P.B.C. = PALM BEACH COUNTY
  - PG. = PAGE
  - R = RADIUS
  - R/W = RIGHT-OF-WAY
  - SF = SQUARE FEET
  - U.E. = UTILITY EASEMENT
  - N:123456.78 = STATE PLANE COORDINATE NORTHING
  - E:123456.78 = STATE PLANE COORDINATE EASTING
  - = SET PERMANENT REFERENCE MONUMENT (PRM) NAIL & DISK "PRM L09870"
- NOTES:**  
COORDINATES SHOWN ARE GRID DATUM = NAD 83 (1990 ADJUSTMENT) AS READJUSTED BY PALM BEACH COUNTY IN 1998  
ZONE = FLORIDA EAST ZONE  
LINEAR UNIT = US SURVEY FEET  
COORDINATE SYSTEM = 1983 STATE PLANE  
PROJECTION = TRANSVERSE MERCATOR  
ALL DISTANCES ARE GROUND (UNLESS OTHERWISE NOTED)  
SCALE FACTOR = 1.000029891  
GROUND DISTANCE X SCALE FACTOR = GRID DISTANCE

SOUTH 1/4 CORNER OF SECTION 34-43-42 PER P.B.C. (NOT FOUND)  
N:853150.1793  
E:935346.8289  
(FOUND NAIL & DISK STAMPED "LB7055" 1.61"E.)